



Headquarters

Add: 5th Floor, No. 233, Jinke Road South, Jinniu District, Chengdu, China

Tel: 86-28-87593029 Fax: 86-28-87593050

Website: <http://www.klt.com.cn>

E-mail: ovseatrade@klt.com.cn

KLT Carbide USA, Inc

Add: 8750 Fawn Trail, Suite 200, Conroe, TX 77385

Tel: (936) 271-3315 Fax: (936) 271-3324

Website: <http://www.klt-usa.com>

E-mail: Info@klt-usa.com



NOZZLES

KLT Carbide Co., Ltd.



KLT Carbide Co. Ltd., established in 1988, is an international company which specializes in making cemented carbides and hard facing materials. Our products are widely used as highly wear resistant parts, molds for metal products and mining tools, especially mechanical seal rings, bushings, valve parts and nozzles for Oil, Gas industries and other flow control projects.

We are one of the biggest Chinese manufacturers for seal rings and bushings and also provide wear resistant solutions and technical support to customers.



Main products and corresponding industries

1. Wear resistant parts
 - 1.1 Wear parts for Oil, Gas industries and other flow control projects
 - 1.1.1 Mechanical seal rings
 - 1.1.2 Sleeves
 - 1.1.3 Nozzles
 - 1.1.4 Valve parts
 - 1.2 Blank dies
 - 1.2.1 Wire drawing dies
 - 1.2.2 Stamping dies for standard fasteners
 - 1.2.3 Forming dies for powder metallurgy
 - 1.2.4 Plates
2. Cemented carbide inserts for engineering, oil-field drilling and mining
 - 2.1 Carbide inserts for engineering and oil-field drilling
 - 2.2 Carbide inserts for coal mining
 - 2.3 Carbide inserts for geological prospecting and exploration
 - 2.4 Mining bits
3. Blank bars and grinding bars
4. Metal cutting inserts

Brazed tips, indexable inserts and heavy cutting inserts
5. Hard facing materials and surface treatments

Coating with cemented carbide powder, welding with composite rods, spray welding and thermal spraying



Grades for nozzles

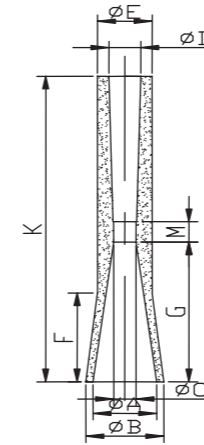
Grade	Co (wt %)	Density (g/cm ³)	Hardness (HRA)	TRS (≥N/mm ²)
KC100	5.8~6.2	14.6~15.0	91.5~92.5	2000
KC101	5.8~6.2	14.6~15.0	91.5~92.5	2500
KC200	7.8~8.2	14.5~14.9	91.0~92.0	2100
KC201	7.8~8.2	13.5~14.9	91.0~92.0	2800
Grade	Ni (wt %)	Density (g/cm ³)	Hardness (HRA)	TRS (≥N/mm ²)
KN100	6.5~7.5	14.5~14.8	88.5~91.0	1800
KN101	6.5~7.5	14.5~14.8	88.5~91.0	2200
KTN10	19.5~20.5	6.5~7.5	90.5~92.0	1600
Grade	Co+Ni (wt %)	Density (g/cm ³)	Hardness (HRA)	TRS (≥N/mm ²)
KTT50	14.0~15.0	8.9~9.5	89.0~91.0	1600
KTP10	7.0~9.0	11.5~13.0	89.5~91.0	1800



Type for nozzles

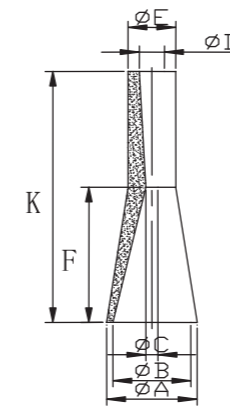
Venturi nozzles

Type KP01



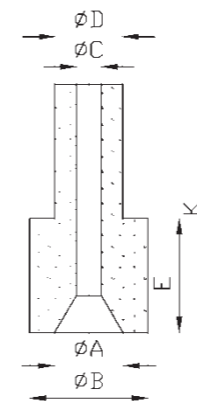
Type	Dimension (mm)									
	ΦA	ΦB	ΦC	ΦD	ΦE	F	G	M	K	
	±0.25	±0.25	±0.20	±0.20	±0.25	±1	±1	±1	±0.5	
KP01-1	24.5	30	5.0	9.0	18.0	50	69	21	130	
KP01-2	24.5	30	8.0	12.5	20.0	50	69	21	140	
KP01-3	24.5	30	10.0	13.5	21.0	50	69	21	170	
KP01-4	24.5	30	13.0	19.5	27.0	50	69	21	226	
KP01-5	30	36	6.5	12.5	19.5	54	70	20	130.4	
KP01-6	30	36	8.0	12.5	19.5	54	70	20	141	
KP01-7	30	36	11.0	15.0	21.5	55	69	21	200	
KP02-6	38.0	32.0	11.0	11.0	21.0	45.0	80.0			

Type KP02



Type	Dimension (mm)						
	ΦA	ΦB	ΦC	ΦD	ΦE	F	K
	±0.25	±0.25	±0.20	±0.20	±0.25	±2	±0.5
KP02-1	32.0	25.0	6.2	8.0	16.0	45.0	78.0
KP02-2	32.0	25.0	8.0	10.0	18.0	45.0	78.0
KP02-3	32.0	25.0	11.0	13.0	21.0	45.0	78.0
KP02-4	38.0	32.0	6.2	6.2	16.0	45.0	80.0
KP02-5	38.0	32.0	8.0	8.0	18.0	45.0	80.0

Type KP03

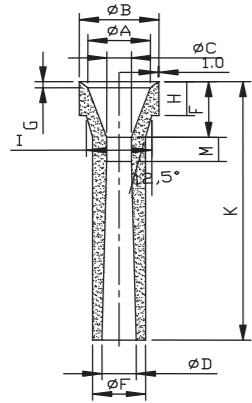


Type	Dimension (mm)					
	ΦA	ΦB	ΦC	ΦD	E	K
	±0.15	±0.15	±0.15	±0.15	±0.20	±0.20
KP03-1	18.0	27.0	6.0	12.0	36.0	72.0
KP03-2	18.0	27.0	8.0	14.0	36.0	72.0
KP03-3	18.0	22.0	6.0	13.0	36.0	86.0
KP03-4	18.0	22.0	8.0	15.0	36.0	86.0



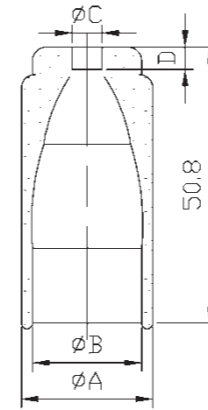
◆ Slurry nozzles

Type KP04



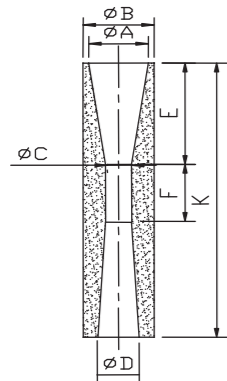
Type	Dimension (mm)										
	ΦA ±0.3	ΦB ±0.2	ΦC ±0.2	ΦD ±0.3	ΦF ±0.3	F	G	H	I	M	K ±0.5
KP04-1	20	26	6	9	15	24	3	15	21	9	110
KP04-2	20	26	8	11	17	24	3	15	21	9	110
KP04-3	25.5	33	10	13	19	44	3	10	29	21	110
KP04-4	25.5	33	11	14	20	44	3	10	29	21	110

Type KJ01



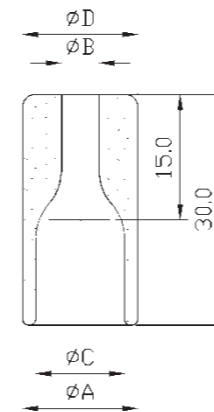
Type	Dimension (mm)			
	ΦC	ΦA	ΦB	D
KJ01-64	6.4	20.31	15.75	6.4
KJ01-71	7.1	20.31	15.75	7.1
KJ01-86	8.6	20.31	15.75	8.6
KJ01-94	9.4	20.31	15.75	9.4
KJ01-109	10.9	20.31	15.75	10.9
KJ01-117	11.7	20.31	15.75	11.7
KJ01-127	12.7	20.31	15.75	12.7
KJ01-142	14.2	20.31	15.75	14.2

Type KP05



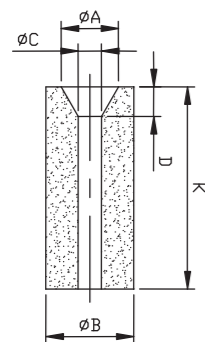
Type	Dimension (mm)						
	ΦA ±0.2	ΦB ±0.2	ΦC ±0.2	ΦD ±0.2	E ±0.5	F ±0.5	K ±0.3
KP05-1	14	18	4.8	10	35	20	96
KP05-2	14	18	6.5	10	35	20	96
KP05-3	17	22	8.0	12	45	30	120
KP05-4	17	22	10.0	12	45	30	120

Type KJ02



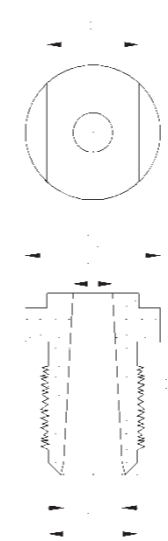
Type	Dimension (mm)		
	ΦB	ΦA (ΦD)	ΦC
KJ02-64	6.4	18.8	14.73
KJ02-71	7.1	18.8	14.73
KJ02-86	8.6	18.8	14.73
KJ02-94	9.4	18.8	14.73
KJ02-109	10.9	18.8	14.73
KJ02-117	11.7	18.8	14.73
KJ02-127	12.7	18.8	14.73

Type KP06



Type	Dimension (mm)				
	ΦA±0.2	ΦB±0.2	ΦC±0.2	D±0.5	K±0.5
KP06-1	12	18	3	6	43
KP06-2	15	18	6.5	6	43
KP06-3	8	15	5	6	60
KP06-4	11	15	8	6	60
KP06-5	14	15	11	6	60

Type KJ03



Type	Dimension (mm)					
	ΦE	ΦA	ΦB	ΦC	ΦD	H
KJ03-71	7.1	12.7	15.9	15.9	22.2	25.4
KJ03-71-1	7.1	15.9	19.0	19.0	25.4	28.6
KJ03-95	9.5	12.7	15.9	15.9	22.2	25.4
KJ03-95-1	9.5	15.9	19.0	19.0	25.4	28.6
KJ03-103	10.3	12.7	15.9	15.9	22.2	25.4
KJ03-103-1	10.3	15.9	19.0	19.0	25.4	28.6
KJ03-111	11.1	12.7	15.9	15.9	22.2	25.4
KJ03-111-1	11.1	15.9	19.0	19.0	25.4	28.6
KJ03-127	12.7	15.9	15.9	15.9	22.2	25.4
KJ03-127-1	12.7	15.9	19.0	19.0	25.4	28.6
KJ03-143	14.3	15.9	19.0	19.0	25.4	28.6
KJ03-151	15.1	15.9	19.0	19.0	25.4	28.6
KJ03-175	17.5	17.5	19.0	19.0	25.4	28.6